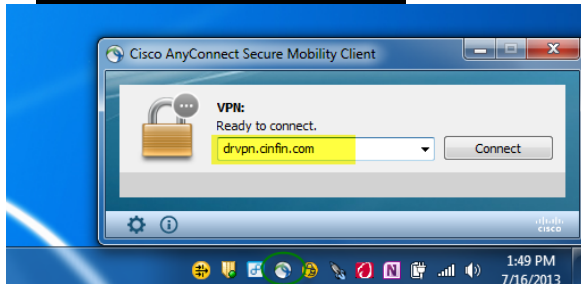


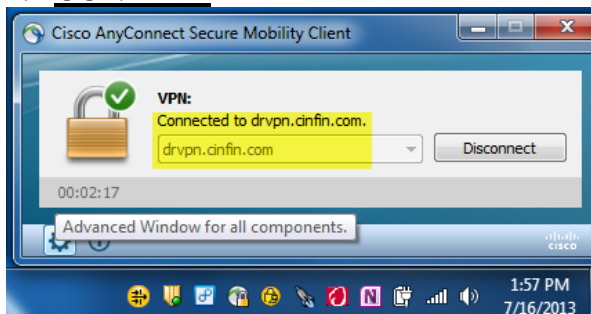
DR VPN Connection Procedure

1. CONFIGURE (DR Access)



- Open the Cisco AnyConnect Secure Mobility Client.
- In the drop down box you will see "CIC-VPN". Clear the contents of this box and manually enter: **drvpn.cinfin.com**
- Click the "Connect" button and enter your VPN credentials as you normally would.

2. CONFIRM



- After the connection is established click on the Cisco AnyConnect icon in the system tray (lower right corner) to confirm that your client is "**Connected to drvpn.cinfin.com**".

If you do **not** have the ability to change the content beneath Ready to Connect:

- Click the **Setting** icon (small gear-shaped icon) in the lower left corner of the Any Connect VPN window.
- If the next window that appears displays tabs, choose **Preferences**; if not, choose **Advanced Settings** and then the **Preferences** tab.
- If the box next to **Enable automatic VPN server selection** is checked, please deselect it and close the window to save your change.
- You should now be able to change the content beneath Ready to Connect to drvpn.cinfin.com.